



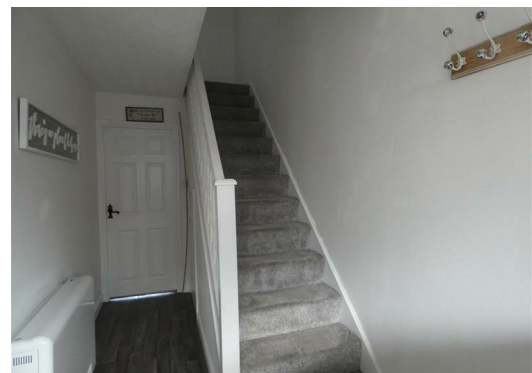
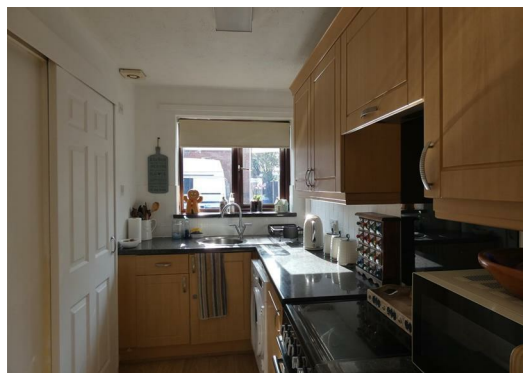
## 7 Bramble Mews

Mickleover, Derby, DE3 0GD

£900



Unfurnished 2 Bedroom mid terrace house in popular cul de sac location in Mickleover. Benefiting from uPVC double glazing, modern electrical heating. Comprises kitchen, lounge, 2 bedrooms, bathroom and enclosed rear garden. Close to village amenities, easy access to A38 and Derby hospital. EPC D Council tax B



## Requirements

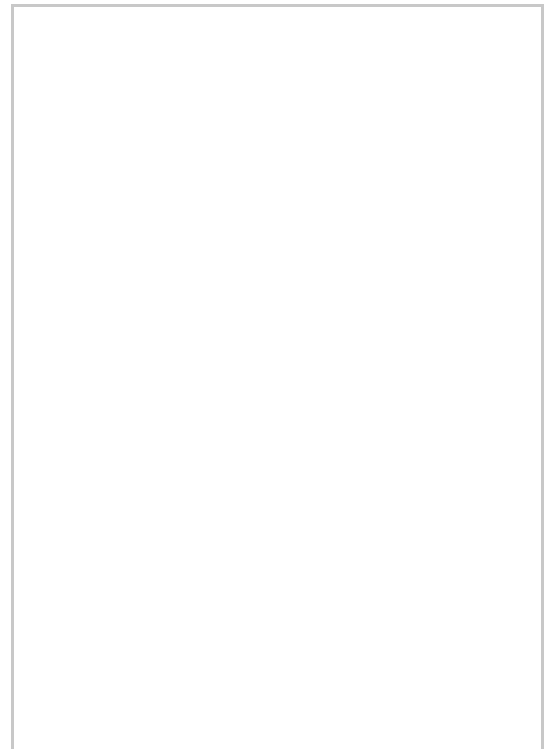
Holding deposit equal to 1 weeks rent - £207.69 this will be allocated to the first months rent on move in.

Security deposit £1038.00 to be paid 7 days prior to move - lodged with the Deposit Protection Scheme prior to move in.

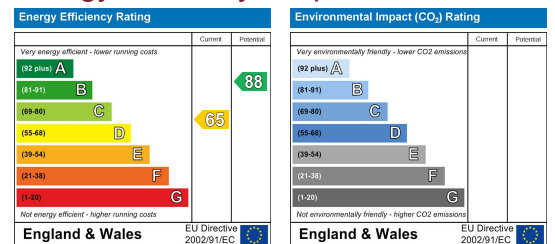
Balance of first months rent on move in - £692.31



## Floor Plans



## Energy Efficiency Graph



These particulars, whilst believed to be accurate are set out as a general outline only for guidance and do not constitute any part of an offer or contract. Intending purchasers should not rely on them as statements of representation of fact, but must satisfy themselves by inspection or otherwise as to their accuracy. No person in this firms employment has the authority to make or give any representation or warranty in respect of the property.

33 Main Street, Stretton, Burton on Trent, Staffordshire, DE13 0EA  
 T: 01283 534818 | E: info@sj4homes.com | www.sj4homes.com