



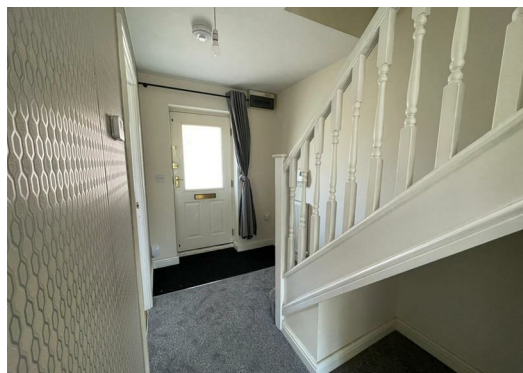
49 Kingsmead

Stretton, Burton On Trent, DE13 0FQ

£850 PCM



Two bedroom mid town house in cul de sac location fitted with brand new carpets benefiting from double glazing and gas central heating. Comprising of entrance hall, lounge, kitchen, master bedroom with fitted wardrobe, 2nd bedroom, bathroom with shower over bath. Enclosed rear garden. Allocated off road parking space. Easy access to Stretton village, Burton town centre & A38. EPC C. Council tax B.



Requirements

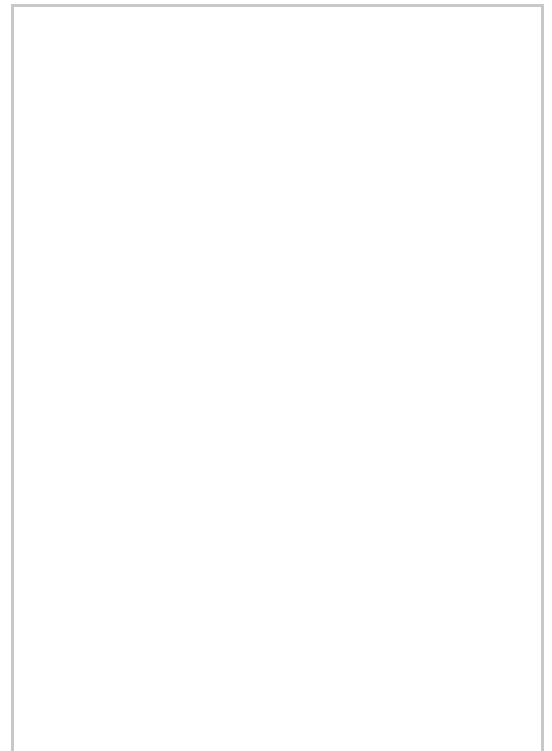
Holding Deposit £196 - will be allocated towards first months rent on move in

Deposit - payable 7 days prior to commencement of tenancy £980- lodged with the DPS prior to move in

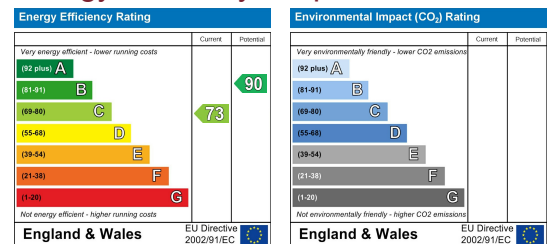
Balance of months rent payable on move in £654



Floor Plans



Energy Efficiency Graph



These particulars, whilst believed to be accurate are set out as a general outline only for guidance and do not constitute any part of an offer or contract. Intending purchasers should not rely on them as statements of representation of fact, but must satisfy themselves by inspection or otherwise as to their accuracy. No person in this firm's employment has the authority to make or give any representation or warranty in respect of the property.

33 Main Street, Stretton, Burton on Trent, Staffordshire, DE13 0EA
 T: 01283 534818 | E: info@sj4homes.com | www.sj4homes.com